



Infrastructure

The Department is well-equipped to provide a comprehensive learning experience for Robotics and Automation engineering students.

Fully Fledged Laboratories: The presence of fully-fledged laboratories indicates that students have access to advanced technology and tools relevant to their field of study. This allows them to gain hands-on experience and practical skills, which are crucial in the field of Robotics and Automation engineering.

1. **Latest Software and Systems:** Keeping the laboratories up-to-date with the latest software and systems is essential for ensuring that students are exposed to current industry standards and technologies. This prepares them for the challenges of the rapidly evolving field.
2. **Experienced Faculty:** Mentioning the best faculties implies that the department places a high value on the quality of teaching. Experienced faculty members can guide students effectively, providing them with valuable insights and mentorship.
3. **Seminar Halls and Classrooms:** Well-equipped seminar halls and classrooms are crucial for conducting lectures, seminars, and interactive sessions. These spaces contribute to a conducive learning environment and facilitate effective communication between students and faculty.
4. **Departmental Library:** A dedicated departmental library is valuable for students to access additional resources, reference materials, and research papers. It promotes self-directed learning and supports academic research.
5. **Research Center:** The presence of a research center suggests a commitment to advancing knowledge in the field. This can provide opportunities for both faculty and students to engage in cutting-edge research and contribute to the academic community.

Overall, the combination of these facilities and resources indicates a comprehensive and well-rounded approach to education in Robotics and Automation. Students are not only exposed to theoretical concepts but also have the opportunity to apply their knowledge in practical settings and engage in research activities.



RajaRajeswari College of Engineering

(Approved by AICTE, New Delhi, Govt. of Karnataka, Affiliated to Visvesvaraya Technological University, Belagavi)



#14, Ramohalli Cross, Kumbalgotu, Mysore Road, Bengaluru – 560074

Department of Robotics & Automation

Automation Lab



Janatics- Electro Pneumatic Automation Training Kit



Students practicing using Janatics- Electro Pneumatic Automation Training Kit



RajaRajeswari College of Engineering

(Approved by AICTE, New Delhi, Govt. of Karnataka, Affiliated to Visvesvaraya Technological University, Belagavi)



#14, Ramohalli Cross, Kumbalgodu, Mysore Road, Bengaluru – 560074

Department of Robotics & Automation



Google

Bengaluru, Karnataka, India
DEPARTMENT OF R &A, RRCE
Lat 12.886242°
Long 77.449773°
09/08/23 01:23 PM GMT +05:30

Robotics and Simulation & Automation Lab Infrastructure



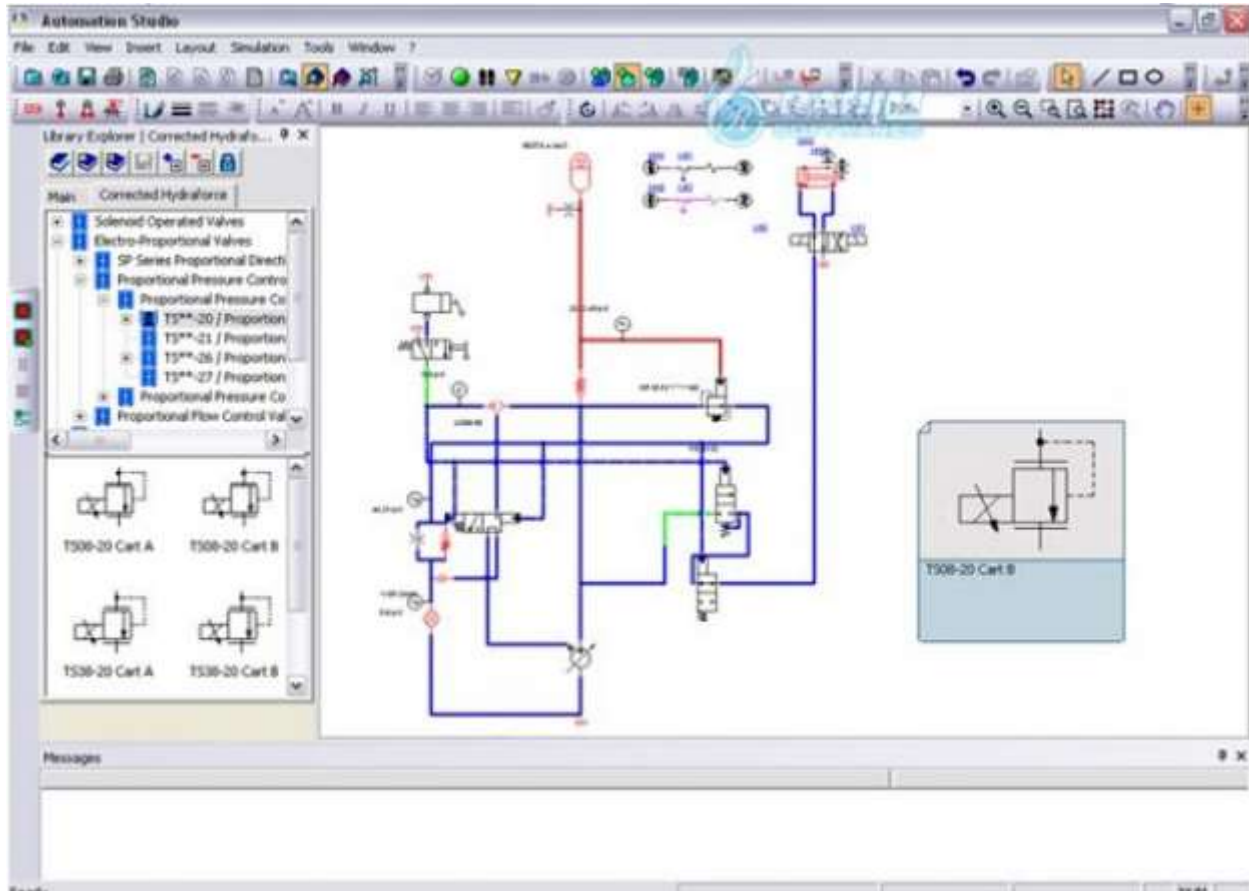
RajaRajeswari College of Engineering

(Approved by AICTE, New Delhi, Govt. of Karnataka, Affiliated to Visvesvaraya Technological University, Belagavi)



#14, Ramohalli Cross, Kumbalgotu, Mysore Road, Bengaluru – 560074

Department of Robotics & Automation



Automation Studio software

- Prepared by Dr.M.Karthikeyan, HOD RA