

# RAJARAJESWARI COLLEGE OF ENGINEERING

Approved by AICTE, New Delhi.

Affiliated to the Visvesvaraya Technological University, Belagavi



Criteria: 7

## Criteria-7

### DVV Clarification report

#### Index sheet

#### 7.1.5: Green campus initiatives include:

1. Restricted entry of automobiles
2. Use of Bicycles / Battery powered vehicles
3. Pedestrian friendly pathways
4. Ban on use of plastic
5. Landscaping with trees and plants

Sl. No.	Justification	Page No.
1.	Policy document highlighting the section in the handbook/calendar mentioning the policy, on the green campus, attested by Principal.	1-7
2.	Policy document on circulars for the implementation of the initiatives and any othersupporting documents, attested by Principal.	8-15
3.	Green Audit Certificate from Govt. recognized competent organizations/ agencies for the relevant period.	16-17
4.	Documents supporting availability pedestrian friendly pathways, plastic free campus,and promotion of electric powered vehicles in the campus etc. / boards or posters pasted in class rooms/ canteen/ corridor etc. attested by Principal.	18-29
5.	Inc & Exp. account highlighting the amount spend on the referred facilities certified by external auditor counter signed by Principal.	30-35
6.	Please provide screenshot of web pages of the College website mentioning the green policy/ web link to College web site to support the HEI claim.	36
7.	Please provide geo tagged photographs/ videos with captions & dates for all facilitiesmentioned in DVV portal.	37-44

\*\*\*\*\*

## RAJARAJESWARI COLLEGE OF ENGINEERING

Approved by AICTE, New Delhi.

Affiliated to the Visvesvaraya Technological University, Belagavi



Criteria: 7



### DVV Clarification report

#### 7.1.5: Green campus initiatives include:

1. Policy document highlighting the section in the handbook/calendar mentioning the policy, on the green campus, attested by Principal.

**Policy document on Green campus is attached**

**Principal**

**Principal**

**RAJARAJESWARI**

**COLLEGE OF ENGINEERING**

**Ramohalli Cross, Bengaluru-74**

## RAJARAJESWARI COLLEGE OF ENGINEERING

Approved by AICTE, New Delhi.

Affiliated to the Visvesvaraya Technological University, Belagavi



Criteria: 7.1 Academic Years: 2016-2021




### POLICY DOCUMENT ON GREEN CAMPUS

#### Green Campus Policy:

1. **Restricted entry of vehicles:** The College encourages the employees and students to frequently use college transport, public transport, bicycles, etc. to reduce the emissions. Each vehicle entering into the institution premises is noted down by the security person and it is checked for emission certification.
2. **Pedestrian-friendly pathways:** RRCE campus ensures Pedestrian-friendly pathways.
3. **Ban on Use of plastic:** Use of Plastic inside campus premises is prohibited.
4. **Landscaping with trees and plants:** As per the green practices in the campus, RRCE is moving in the direction of a Green Institution in Karnataka planting more trees within and outside the campus.

#### 1. RESTRICTED ENTRY OF AUTOMOBILE

In RRCE campus, entry of vehicles is restricted up to a certain point. At the main entrance of college, visitor's vehicle entry register is maintained which maintains the vehicle number of all visitors. The vehicles having emission certificate, are only allowed into the college campus. Emission certified vehicles ensure that there will be minimum pollution, which in turn makes good greener environment and reduces the Global Warming. Photo.1 shows the Signboard, emission certified vehicle and visitors vehicle entry log book. Measures have been taken to create awareness to students and staff to use public transport and college transport facility to reach college by issuing circulars.

  
Principal  
RAJARAJESWARI  
COLLEGE OF ENGINEERING  
Ramohalli Cross, Bengaluru-74

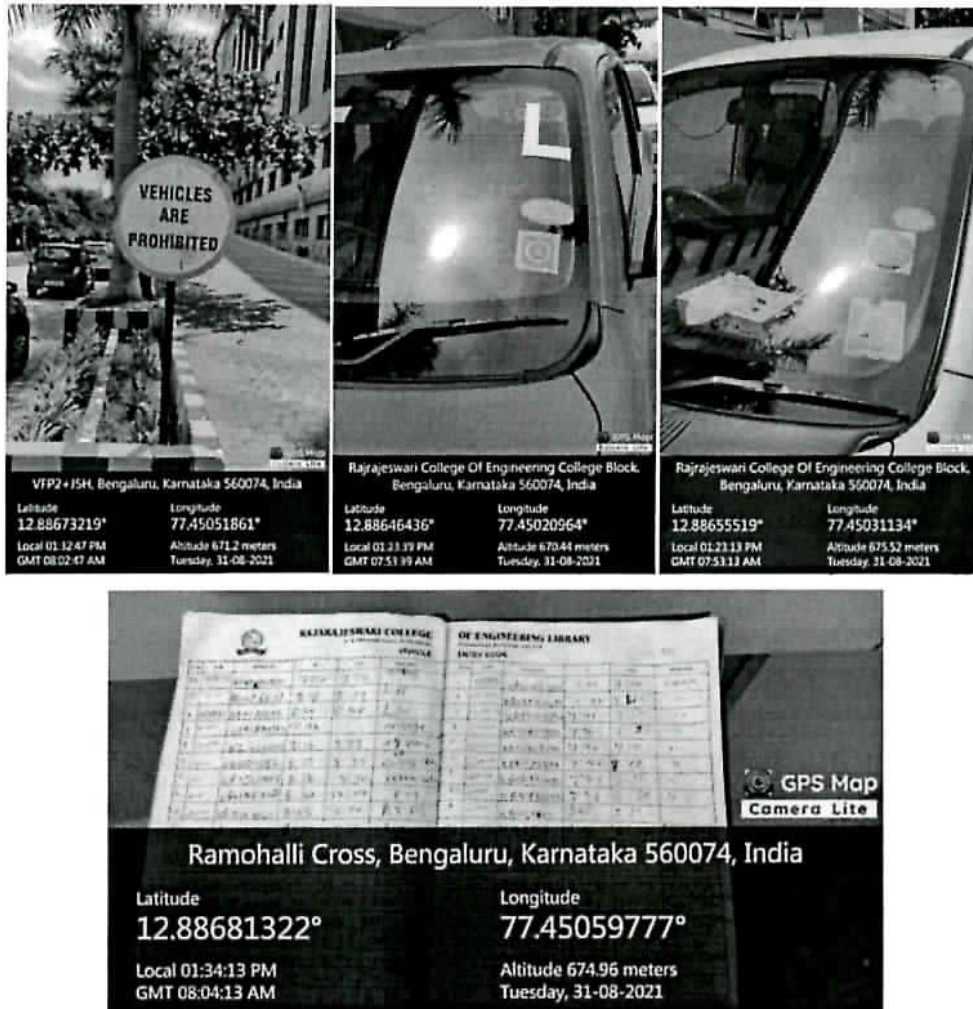
## RAJARAJESWARI COLLEGE OF ENGINEERING

Approved by AICTE, New Delhi.

Affiliated to the Visvesvaraya Technological University, Belagavi



Criteria: 7.1 Academic Years: 2016-2021



Photos.1: Photos showing measures taken to restrict entry of automobiles to the campus

### 2. PEDESTRIAN FRIENDLY PATHWAYS

The campus of RRCE ensures tiles paved pedestrian friendly paths have been constructed for smooth movement of students, faculty and other staff members of the institute. The pedestrian paths are being well maintained on regular basis for keeping them free of mud and dust. On either side of the paths, proper concrete boundaries are made and painted. Pedestrian pathways ensure safety of all stakeholders. Photo.2 shows pedestrian friendly pathways.

#14, Ramohalli Cross, Kumbalagodu, Mysore Road, Bengaluru-74

<https://www.rrce.org>

J. oed  
RAJARAJESWARI  
COLLEGE OF ENGINEERING  
KUMBALAGODU, MYSORE ROAD, BANGALURU-74



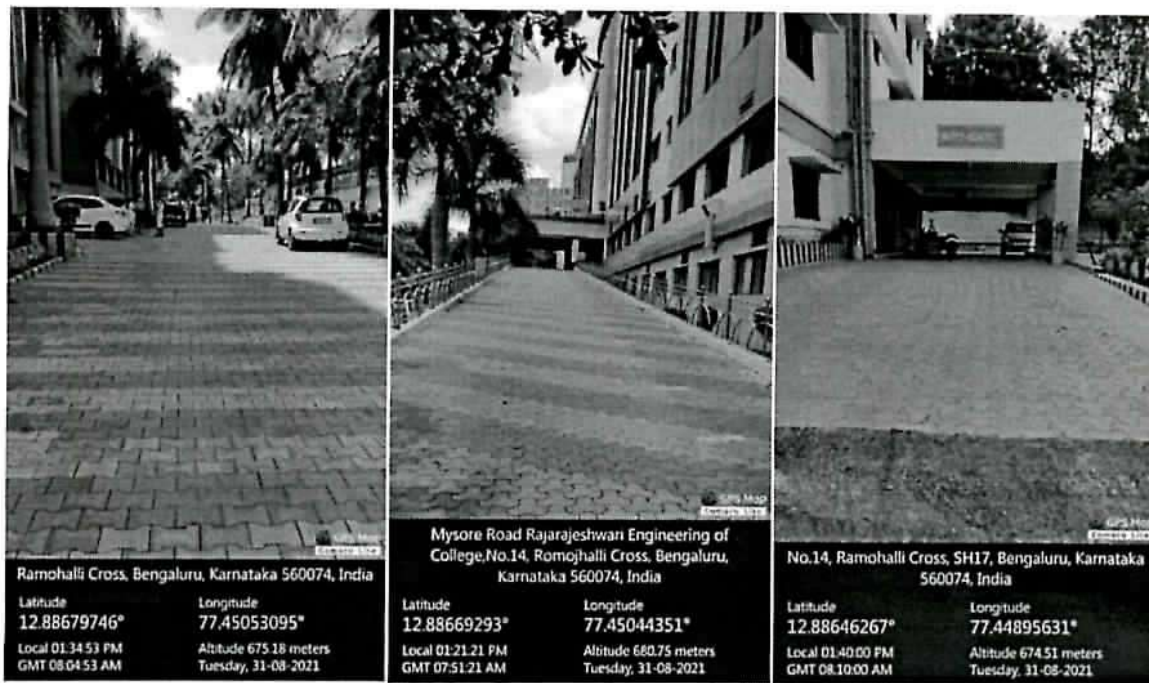
## RAJARAJESWARI COLLEGE OF ENGINEERING

Approved by AICTE, New Delhi.

Affiliated to the Visvesvaraya Technological University, Belagavi



Criteria: 7.1 Academic Years: 2016-2021



Photos.2: Pedestrian friendly pathways

### 3. BAN ON USE OF PLASTIC



Photo.3: Information hand out on ways to beat plastic in daily life is displayed in notice board

#14, Ramohalli Cross, Kumbalagodu, Mysore Road, Bengaluru-74

<https://www.rrce.org>

## RAJARAJESWARI COLLEGE OF ENGINEERING

Approved by AICTE, New Delhi.

Affiliated to the Visvesvaraya Technological University, Belagavi



Criteria: 7.1 Academic Years: 2016-2021



Single-use plastic items such as plastic bottles, bags, spoons, straws and cups are banned completely and awareness is created among staff and students through orientation and display boards in the premises (Photo.3 and Photo.4). To restrict the use of plastic, measures have been taken to replace plastic tea cups and glasses with steel glasses in the canteen. The staff and students are informed to use steel or copper water bottles instead of plastic bottles. The institution also conducted activities on the Ban on use of plastics and created awareness to the faculties the localities in and around the campus. Measures have been taken to create awareness to students and staff not to use plastic materials inside the college campus by issuing circulars.



Photo.4: Information hand out on recycling of plastic in daily life is displayed in notice boards

#14, Ramohalli Cross, Kumbalagodu, Mysore Road, Bengaluru-74

<https://www.rrce.org>

Principal  
RAJARAJESWARI  
COLLEGE OF ENGINEERING  
Ramohalli Cross, Bengaluru-74



## RAJARAJESWARI COLLEGE OF ENGINEERING

Approved by AICTE, New Delhi.

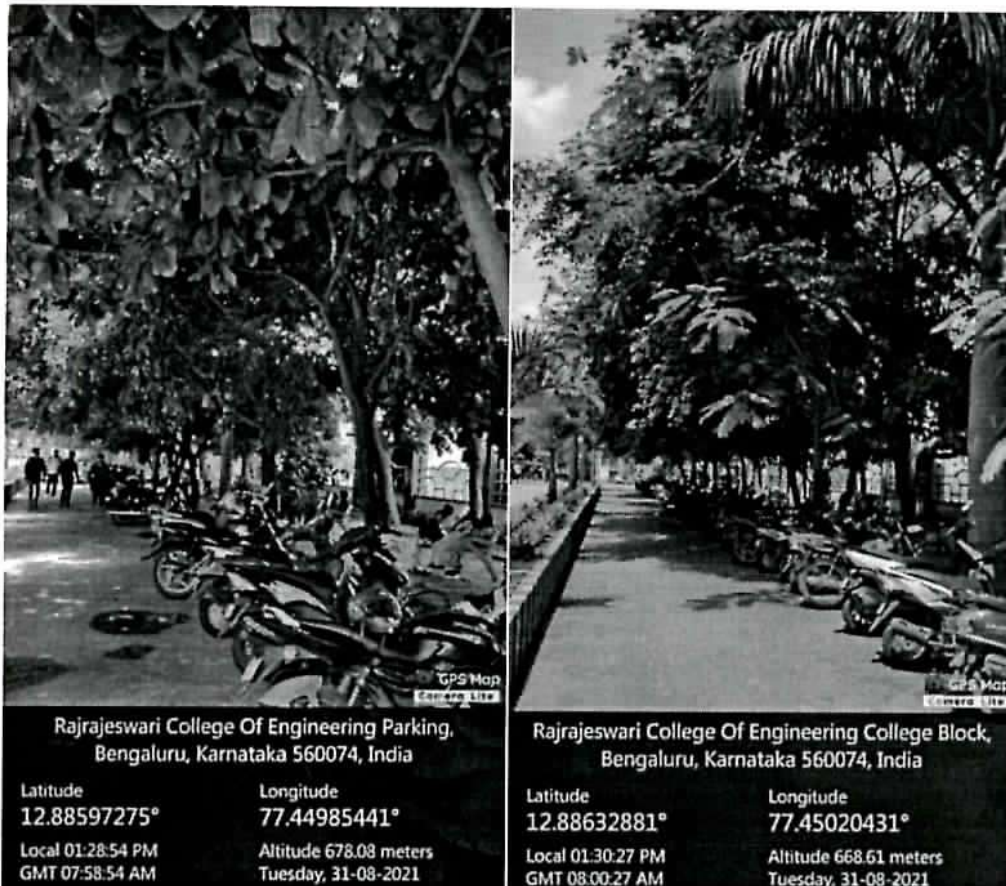
Affiliated to the Visvesvaraya Technological University, Belagavi



Criteria: 7.1 Academic Years: 2016-2021



### 4. LANDSCAPING WITH TREES AND PLANTS



Rajarajeswari College Of Engineering Parking,  
Bengaluru, Karnataka 560074, India

Latitude 12.88597275° Longitude 77.44985441°  
Local 01:28:54 PM Altitude 678.08 meters  
GMT 07:58:54 AM Tuesday, 31-08-2021

Rajarajeswari College Of Engineering College Block,  
Bengaluru, Karnataka 560074, India

Latitude 12.88632881° Longitude 77.45020431°  
Local 01:30:27 PM Altitude 668.61 meters  
GMT 08:00:27 AM Tuesday, 31-08-2021



Bengaluru, Karnataka, India  
Rajarajeswari College Of Engineering College Block, Bengaluru,  
Karnataka 560074, India  
Lat 12.886239°  
Long 77.450271°  
03/09/21 12:56 PM

Bengaluru, Karnataka, India  
Rajarajeswari College Of Engineering College Block, Bengaluru,  
Karnataka 560074, India  
Lat 12.8864°  
Long 77.450210°  
03/09/21 12:57 PM

Photos.5: Plantations in the college campus

#14, Ramohalli Cross, Kumbalagodu, Mysore Road, Bengaluru-74

J. Reddy

<https://www.rrce.org>

Principal  
RAJARAJESWARI  
COLLEGE OF ENGINEERING  
Ramohalli Cross, Bengaluru-74

## RAJARAJESWARI COLLEGE OF ENGINEERING

Approved by AICTE, New Delhi.

Affiliated to the Visvesvaraya Technological University, Belagavi



Criteria: 7.1 Academic Years: 2016-2021



Plantation activity has been practiced all around the campus to make the campus atmosphere environmental friendly. Green club established in the college, ensures the organization of tree plantation on World Environment Day, which in turn reduces the changes happening in the climate. College also ensures that by planting more number of trees, Global warming reduces drastically. Photo.5 shows the different regions inside the college campus landscaping with trees and plants. There is enough extent of plantation to reduce evaporative loss and soil erosion inside the campus.

**Principal**

Principal

RAJARAJESWARI

COLLEGE OF ENGINEERING

Ramohalli Cross, Bengaluru-74



## RAJARAJESWARI COLLEGE OF ENGINEERING

Approved by AICTE, New Delhi.

Affiliated to the Visvesvaraya Technological University, Belagavi



Criteria: 7



### 7.1.5: Green campus initiatives include:

2. Policy document on circulars for the implementation of the initiatives and any other supporting documents, attested by Principal.

SL. No	Circulars	Date
01.	Ban on use of plastic	18/12/2020
02.	Restricted entry of automobiles	10/08/2020
03.	Reducing plastic waste	23/12/2019
04.	Green Initiative Reform Program	09/12/2019
05.	Practicing Green Campus	10/08/2018
06.	Restriction of automobile inside the campus	10/08/2017
07.	Reducing carbon footprint	10/08/2016

J. adk

Principal

Principal

RAJARAJESWARI

COLLEGE OF ENGINEERING

Ramohalli Cross, Bengaluru-74

# RAJARAJESWARI COLLEGE OF ENGINEERING

Approved by AICTE, New Delhi.

Affiliated to the Visvesvaraya Technological University, Belagavi



Academic Year: 2020-21



Date: 18/12/2020

## CIRCULAR

The plastic waste has emerged as one of the biggest environmental concerns adversely impacting the water, soil, health and well being of citizens. The limited waste disposal systems have become a challenge to dispose of plastic waste materials.

To reduce the usage of plastic, the University Grants Commission has issued special guidelines to all the institutions to impose ban on single use plastics in the campus.

To meet the above criteria, it is here by circulated for the information of all concerned that the governing council of RajaRajeswari College of Engineering has decided to take the following steps to put ban on single use of plastic material in the campus.

1. To ban use of single use plastic in the campus premises, hostel, canteen, playground etc.
2. To mandate all the staff members / students to avoid bringing non-bio degradable plastic items in the campus.
3. To keep sign boards at various places, to give awareness to ban on use of plastic in the campus.
4. To avoid the use of plastic water bottles, bags and encourage the use of alternate solution like paper bags.

**PRINCIPAL**

Principal

RAJARAJESWARI

COLLEGE OF ENGINEERING

Ramohalli Cross, Bengaluru-74

### Copy to:

1. All HOD's
2. All class rooms for circulation
3. All department Notice board
4. College notice board

#14, Ramohalli Cross, Kumbalagodu, Mysore Road, Bengaluru-74

<https://www.rcce.org>

Principal  
RAJARAJESWARI  
COLLEGE OF ENGINEERING  
Ramohalli Cross, Bengaluru-74

# RAJARAJESWARI COLLEGE OF ENGINEERING

Approved by AICTE, New Delhi.

Affiliated to the Visvesvaraya Technological University, Belagavi



Academic Year: 2020-21



Date : 10/08/2020

## CIRCULAR

As part of the Green environment Initiative, all professors and students have been officially informed that using individuals automobile inside the campus is restricted. It is also recommended to utilize public transportation and college transportation facility as much as possible in order to make a little contribution towards lowering the global carbon footprint.

**PRINCIPAL**

Principal

RAJARAJESWARI

COLLEGE OF ENGINEERING

Ramohalli Cross, Bengaluru-74

Copy to:

1. All HOD's
2. All classroom for Circulation
3. All Department notice board
4. College Notice Board

Principal

**RAJARAJESWARI**

COLLEGE OF ENGINEERING

Ramohalli Cross, Bengaluru-74



# RAJARAJESWARI COLLEGE OF ENGINEERING

Approved by AICTE, New Delhi.

Affiliated to the Visvesvaraya Technological University, Belagavi



Academic Year: 2019-20



Date: 23/12/2019

## CIRCULAR

The plastic use inside the campus adversely impacting the green campus initiatives taken by the college. The limited waste disposal to be followed inside the campus and proper disposal of plastic waste materials to be practiced. In order to reduce the usage of plastic, the University Grants Commission has issued special guidelines to all the institutions to impose ban on single use plastics in the campus. To meet the above requirement, it is here by informed to all concerned of RajaRajeswari College of Engineering to take the following steps inside the campus.

1. To ban use of single use plastic in the campus premises, hostel, canteen, playground etc.
2. To mandate all the staff members / students to avoid bringing non-bio degradable plastic items in the campus.
3. To avoid the use of plastic water bottles, bags and encourage the use of alternate solution like paper bags.

PRINCIPAL

### Copy to:

1. All HOD's
2. All class rooms for circulation
3. All department Notice board
4. College notice board

Principal  
RAJARAJESWARI  
COLLEGE OF ENGINEERING  
Ramohalli Cross, Bengaluru-74

Principal  
RAJARAJESWARI  
COLLEGE OF ENGINEERING  
Ramohalli Cross, Bengaluru-74

**RAJARAJESWARI COLLEGE OF ENGINEERING**

Approved by AICTE, New Delhi.

Affiliated to the Visvesvaraya Technological University, Belagavi



Academic Year: 2019-20



Date : 09/12/2019

**CIRCULAR**

As part of the Green Initiative reform program, all faculty and students have been formally informed that driving automobiles inside the campus is banned. It is also recommended to use public transportation and college transportation facility as often as possible to reduce carbon effect in our campus.

J. cedf

**PRINCIPAL**

Principal

RAJARAJESWARI

COLLEGE OF ENGINEERING

Ramohalli Cross, Bengaluru-74

Copy to:

1. All HOD's
2. All classroom for Circulation
3. All Department notice board
4. College Notice Board

J. cedf

**Principal**

**RAJARAJESWARI**

**COLLEGE OF ENGINEERING**

Ramohalli Cross, Bengaluru-74



# RAJARAJESWARI COLLEGE OF ENGINEERING

Approved by AICTE, New Delhi.  
Affiliated to the Visvesvaraya Technological University, Belagavi

Academic Year: 2018-19



Date :10/08/2018

## CIRCULAR

All employees and students have been insisted that, as part of practicing Green Campus, automobile access into the campus is prohibited. You are also advised to use public transportation and college transportation facility as often as possible in order to make a little contribution to environment friendly campus.

  
PRINCIPAL

RAJARAJESWARI  
COLLEGE OF ENGINEERING  
Ramohalli Cross, Bengaluru-74

Copy to:

1. All HOD's
2. All classroom for Circulation
3. All Department notice board
4. College Notice Board



Principal  
RAJARAJESWARI  
COLLEGE OF ENGINEERING  
Ramohalli Cross, Bengaluru-74



**RAJARAJESWARI COLLEGE OF ENGINEERING**

Approved by AICTE, New Delhi.  
Affiliated to the Visvesvaraya Technological University, Belagavi



Academic Year: 2017-18



Date :10/08/2017

**CIRCULAR**


All professors, other employees and students have been officially advised that, as part of the Green Policy Initiative, automobile access onto campus is to be avoided. You are also advised to use public transportation and college transportation facility as often as possible in order to practice green campus.

  
**PRINCIPAL**

RAJARAJESWARI  
COLLEGE OF ENGINEERING  
Ramohalli Cross, Bengaluru-74

**Copy to:**

1. All HOD's
2. All classroom for Circulation
3. All Department notice board
4. College Notice Board

  
Principal  
RAJARAJESWARI  
COLLEGE OF ENGINEERING  
Ramohalli Cross, Bengaluru-74



# RAJARAJESWARI COLLEGE OF ENGINEERING

Approved by AICTE, New Delhi.  
Affiliated to the Visvesvaraya Technological University, Belagavi

Academic Year: 2016-17



Date :10/08/2016

## CIRCULAR


All the staff and students are hereby informed that as part of the Green Policy Initiative, the entry of automobiles inside the campus is forbidden. You are also requested to make maximum use of public transport conveyance and college transportation facility to contribute little mite towards reducing the global Carbon Footprint.

  
PRINCIPAL  
Principal

RAJARAJESWARI  
COLLEGE OF ENGINEERING  
Ramohalli Cross, Bengaluru-74

Copy to:

1. All HOD's
2. All classroom for Circulation
3. All Department notice board
4. College Notice Board

  
Principal  
RAJARAJESWARI  
COLLEGE OF ENGINEERING  
Ramohalli Cross, Bengaluru-74

## RAJARAJESWARI COLLEGE OF ENGINEERING

Approved by AICTE, New Delhi.

Affiliated to the Visvesvaraya Technological University, Belagavi



Criteria: 7



### 7.1.5: Green campus initiatives include:

3. Green Audit Certificate from Govt. recognized competent organizations/ agencies for the relevant period.

Green Audit Certificate Attached

J. adh

Principal

Principal

RAJARAJESWARI

COLLEGE OF ENGINEERING

Ramohalli Cross, Bengaluru-74





# PRAKRUTHI

## INSTITUTE OF ENVIRONMENTAL STUDIES

### UNIT OF PRAKRUTHI FOUNDATION®

Ref: PIES/RRCE/AUDIT/2020-21/01

Date: 02.12.2021

#### CERTIFICATE

This is to certify that **M/s. RajaRajeswari College of Engineering #14, Ramohalli Cross, Kumbalagodu, Mysore Road, Bengaluru-560 074** has successfully undergone **GREEN AUDIT**.

The audit was conducted as per GRI indicators and other ISO standards as applicable with the moral support of the Principal, Teaching staff, non - teaching staff and Students.

The on-site audit was successfully conducted from 19-Nov-2021 to 30-Nov-2021 by Prakruthi Institute of Environmental Studies. Sustainability Assessor, Er. Ramesh Kumar BN, Er. Tushali Jagwani who are qualified personnel for carrying out green audit and did the site inspection.

Environmental GRI indicators considered in these auditing are water, air, noise, energy, waste, carbon footprint and biodiversity. The recommendations are put forth by the audit committee wherever there is scope of improvement.

We thank the college management for taking this proactive initiative for a sustainable journey.

Thanks and Regards  
For Prakruthi Institute of Environmental Studies

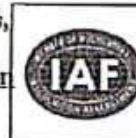
Authorized Signatory

Principal  
RAJARAJESWARI  
COLLEGE OF ENGINEERING  
Ramohalli Cross, Bengaluru-74

Associated concerns: ECO GREEN SOLUTION SYSTEMS PVT. LTD. & CONCEPT TECHNOLOGIES



#93 (New No. 5), 2<sup>nd</sup> Floor 7<sup>th</sup> Cross, Lower Palace Orchards,  
Bengaluru-560003 Tel: 080-23464664/65  
E-Mail: prakruthienv08@gmail.com, ecogreen@egsspl.in  
Website: www.egsspl.in



## RAJARAJESWARI COLLEGE OF ENGINEERING

Approved by AICTE, New Delhi.

Affiliated to the Visvesvaraya Technological University, Belagavi



Criteria: 7



### 7.1.5: Green campus initiatives include:

4. Documents supporting availability pedestrian friendly pathways, plastic free campus, promotion of electric powered vehicles in the campus etc. / boards or posters pasted in class rooms/ canteen/ corridor etc. attested by Principal.

1. Elevator bills are attached herewith for Pedestrian friendly pathway facility
2. Policy document on pedestrian friendly pathways, Plastic free is attached in 7.1.5 (1)
3. Posters on promotion of electric powered vehicles in the campus is attached as geo tagged photos 7.1.5 (7)
4. Posters pasted in class rooms / canteen / corridor etc is attached as geo tagged photos 7.1.5 (7)

J. ash

Principal

Principal

RAJARAJESWARI

COLLEGE OF ENGINEERING

Ramohalli Cross, Bengaluru-74





# RajaRajeswari College of Engineering

(Approved by AICTE, New Delhi, Govt. of Karnataka &  
Affiliated to Visvesvaraya Technological University, Belgaum)

Sponsored by: MOOGAMBIGAI CHARITABLE AND EDUCATIONAL TRUST

## Work Order for Supply & Installation of Elevator for RRCE

RRCE/WO/F006/2014-15

Date: 23/05/2014

To,  
M/s. KONE Elevator India Private Limited,  
No. 4/1, Zenith Chambers,  
2<sup>nd</sup> Floor, Anjaneya Swamy Temple Road,  
Opp. 6<sup>th</sup> Cross, Wilson Graden,  
Bangalore 560 027

Contact Person: Mr. Kiran

Ph: 26573969/70/71

Mob: 9686399811

Email: h.y.kirankumar@kone.com

We are pleased to place the Work Order for the following items as per specification & Price  
Mentioned in Ref :KEI/0013/201405/0003365839 dated 12/05/2014 for our RRCE.

Sl. No.	Particulars	Qty. Reqd.	Price Rs.	Amount Rs.
1	Elevator: Kone 13 passenger automatic elevator with 6 stops & as per specification & enclosed	01 No.	19,30,000.00	19,30,000.00
			<b>Grand Total</b>	<b>19,30,000.00</b>
			<b>Advance 20%</b>	<b>3,86,000.00</b>
			<b>After releasing GAD 20%</b>	<b>3,86,000.00</b>
			<b>Against Proforma invoice 50%</b>	<b>9,65,000.00</b>
			<b>After Commissioning &amp; Handing over 10%</b>	<b>1,93,000.00</b>

### Terms & conditions :

1. All supplies/delivery to our premises & subjected to the approval & Quality confirmation at RRCE, Ramohalli, Mysore Road, Bangalore - 74
2. Site will be prepared as per Kone GAD by the customer. If any civil works are required during execution, the same will be carried out by the customer.
3. Installation, Testing & Commissioning within 2 months from the date of 'site readiness'
4. Payment: 20% Advance, balance 20% after releasing GAD, balance 50% against proforma invoice & balance 10% after commissioning & handing over.
5. Inclusive of all taxes
6. Warranty: 2 years from the date of handing over
7. Inv./DC should quote our WO No. & Date along with Your TIN No.
8. Deduction will be made on the bill amount for late supply or otherwise the entire order will be cancelled.
9. WO Validity - 120 days from the date of WO Raised.

Principal

RAJARAJESWARI

COLLEGE OF ENGINEERING

For RajaRajeswari College of Engineering

CHAIRMAN

Copy to 4 Originals (1 to Supplier, 1 File Copy (Pur), S. Finance Officer), Stores.  
We accept the Work Order:

(Signature of the Authorised Person)

Campus

#14, Ramohalli Cross, Kumbalgodu, Mysore Road  
Bangalore - 560 074

Ph: 080- 65666769/28437124/28437375 Fax: 080- 28437373  
E-mail: info@rrce.org, enquiry@rrce.org





## AUTOMATIC ELEVATOR SPECIFICATION - A

KEI/0013/201405/0003365839

DATE: 12.05.2014

NO. OF ELEVATORS	1 NO.
TYPE AND CAPACITY	PASSENGER & 884 KGS(13 PERSONS)
SPEED	1 METERS/ SECOND
TYPE OF DRIVE	VARIABLE VOLTAGE VARIABLE FREQUENCY DRIVE (V3F)
LOCATION OF MACHINE ROOM	NOT REQUIRED
TRAVEL	18 MTRS APPX
SERVING	GROUND TO 5 <sup>TH</sup> FLOOR (0,1,2,3,4,5) 6 STOPS, 6 LEVELS, 6 OPENINGS
REQUIRED WELL SIZE	2100 MM WIDE X 2900 MM DEEP (AFTER CLEAR PLASTERING)
POWER SUPPLY	415 V THREE - PHASE 50 CYCLES A.C
AUXILIARY	SINGLE-PHASE 220 V 50 CYCLES A.C.
CAR SIZE (CLEAR INSIDE)	1100 MM WIDE X 2000 MM DEEP
CAR ENCLOSURE	STAINLESS STEEL HAIRLINE FINISH
FLOORING	PVC
CAR ILLUMINATION & FAN	INCLUDED
NO. OF ENTRANCE	ONE, LOCATION - FRONT
CAR ENTRANCE	AUTOMATIC CENTRE OPENING STAINLESS STEEL POWER DOOR WITH FULL LENGTH INFRARED LIGHT CURTAIN
LANDING ENTRANCE	CENTER OPENING STAINLESS STEEL DOOR WITH EMERGENCY KEY FITTED TO IT
CLEAR OPENING	900MM WIDE X 2000 MM HEIGHT
CONTROL	MICRO PROCESSOR BASED SIMPLEX SELECTIVE-COLLECTIVE CONTROL WITH OR WITHOUT ATTENDANT OPERATION.
INDICATORS- CAR & LANDINGS	KDS - 50
OTHER FEATURES (INCLUDED)	1) CALL REGISTER INDICATOR 2) MICRO MOVEMENT PUSH BUTTONS(KDS 50) FOR CAR AND LANDINGS WITH WHITE LIGHT 3) INVERTER OPERATED EMERGENCY LIGHT AND ALARM INCLUDING BATTERY 4) FULL LENGTH INFRARED LIGHT CURTAIN IN CAR DOOR. 5) FIREMAN DRIVE 6) INTERCOM 3 way
HEAD ROOM REQUIRED MINIMUM	4100 MM
PIT DEPTH	1400 MM
MACHINE ROOM HEIGHT	2500 MM

**NOTE:**

- 1) SITE HAS TO BE PREPARED AS PER KONE GAD
- 2) IF ANY DEVIATION FOUND AT SITE, NEEDFUL MINOR BUILDER AND CIVIL WORK HAS TO BE DONE BY THE CUSTOMER AS PER KONE INSTRUCTIONS.

Principal  
RAJARAJESWARI  
COLLEGE OF ENGINEERING  
Ramohalli Cross, Bengaluru-74

KONE Elevator India Private Limited  
No.4/1,Zenith Chambers Anjaneya Swamy  
Temple Rd Opp 6th Cross ,Wilson garden  
Bangalore - 560027  
KARNATAKA  
PHONE - 080 - 26573969

# PROGRESS PAYMENT CLAIM



TIN :29250480461  
PAN :AAACK2567P  
ServTax RegnNo :AAACK2567PST001

## BILLING ADDRESS

RAJA RAJESHWARI COLLEGE  
OF ENGINEERING  
MYSORE ROAD, RAMOHALLI CROSS  
KUMBALGODU  
BANGALORE - 560074  
KARNATAKA  
KIND ATTENTION: MR KADHAR BADHSA  
PHONE-919900058204

## CUSTOMER NAME & ADDRESS

RAJA RAJESHWARI COLLEGE  
OF ENGINEERING  
MYSORE ROAD, RAMOHALLI CROSS  
KUMBALGODU  
BANGALORE - 560074  
KARNATAKA

PP Claim No : 144728366  
Date : 24-JUN-2015  
Sales District : 282BA  
Business Area : V1

Customer TIN :  
Customer Service Tax No:  
Sales Order No : 6274208  
Sales Order Date : 20-FEB-2014

Customer Code : 12428703  
Customer Order No :  
KEI/0013/201401/0003365839  
Customer Order Date : 20-JAN-2014

## Site Address

RAJA RAJESHWARI COLLEGE  
OF ENGINEERING  
RAMOHALLI CROSS,MYSORE ROAD, KUMBALGODU  
BANGALORE-560074, KARNATAKA

Network No	Site Name	Payment Stage	Claimed %	Contract value	Stage Amount
70168503	RAJARAJESWARI COLLEGE OF ENGINEERING	Equipment Installed	100.00	1,934,158.20	1,934,158.22

Gross Contract Value for Design, Manufacture, Supply, Installation, Testing and Commissioning of Elevator

Amount Claimed Till date

Payments received till date (Refer Annexure)

1,934,158.22

1,737,000.00

Kindly arrange to make your payment favouring "KONE Elevator India Private Limited".  
For E-Transfers the Bank details are provided below.

Total Outstanding As On date :

197,158.22

Name of the Service : Works contract service

RUPEES ONE HUNDRED NINETY-SEVEN THOUSAND ONE HUNDRED FIFTY-EIGHT AND PAISE TWENTY TWO

Note : This Progressive claim is payable IMMEDIATELY. Interest @ 18% p.a shall be charged, if this claim is not settled within 5 days from the date of this claim.

## Bank Details:

Bank Account # : KONE12428703  
Bank Name : Citibank, N.A 163, Annasalai, Chennai 600002  
IFSC Code : CITI00000003  
E & OE

For KONE Elevator India Private Limited

Regd Office : 50-55 & 58, Vanagaram Road, Ayanambakkam, Chennai-600095, Ph:044-26533904/02/03/04  
Fax : 044-26533912, www.kone.com

*J. deat* Principal  
RAJARAJESWARI  
COLLEGE OF ENGINEERING  
Ramohalli Cross, Bengaluru-74



# PROGRESS PAYMENT CLAIM

**KONE**

KONE Elevator India Private Limited  
No.4/1,Zenith Chambers Anjaneya Swamy  
Temple Rd Opp 6th Cross ,Wilson garden  
Bangalore - 560027  
KARNATAKA  
PHONE - 080 - 26573969

TIN :29250480461  
PAN : AAACK2567P  
ServTax RegnNo : AAACK2567PST001

## BILLING ADDRESS

RAJA RAJESHWARI COLLEGE  
OF ENGINEERING  
MYSORE ROAD, RAMOHALLI CROSS  
KUMBALGODU  
BANGALORE - 560074  
KARNATAKA  
KIND ATTENTION:MR KADHAR BADHSA  
PHONE-919900058204

## CUSTOMER NAME & ADDRESS

RAJA RAJESHWARI COLLEGE  
OF ENGINEERING  
MYSORE ROAD, RAMOHALLI CROSS  
KUMBALGODU  
BANGALORE - 560074  
KARNATAKA

PP Claim No : 144728366  
Date : 24-JUN-2015  
Sales District : 282BA  
Business Area : V1

Customer TIN :  
Customer Service Tax No :  
Sales Order No : 6274208  
Sales Order Date : 20-FEB-2014

Customer Code : 12428703  
Customer Order No :  
KEI/0013/201401/0003365839  
Customer Order Date: 20-JAN-2014

Doc Type	Doc.No	Pst Date	Network No.	Cheque Number	Cheque date	Cheque Value	Dr/CR
UT	14008828	24.02.2014	70168503	003275	08.02.2014	(a) 338,000.00	CR
DT	14072221	24.11.2014	70168503	005890	18.11.2014	(c) 465,000.00	CR
DT	14072225	24.11.2014	70168503	005702	07.11.2014	(b) 338,000.00	CR
DT	14072225	24.11.2014	70168503	005702	07.11.2014	(a) 48,000.00	CR
DT	14073503	26.11.2014	70168503	005116	20.08.2014	(b) 48,000.00	CR
DT	14074931	29.11.2014	70168503	005891	28.11.2014	(a) 332,000.00	CR
DT	14074931	29.11.2014	70168503	005891	28.11.2014	(c) 188,000.00	CR

Total Payment received till date 1,737,000.00

*J. adf*  
Principal  
RAJARAJESWARI  
COLLEGE OF ENGINEERING  
Ramohalli Cross, Bengaluru-74



**KONE Elevator India Private Limited**No.4/1,Zenith Chambers Anjaneya  
Swamy Temple Rd Opp 6th Cross ,Wilson  
garden

Bangalore 560027

KARNATAKA

Phone:080 - 26573969

**BILLING ADDRESS**M/s RAJA RAJESHWARI COLLEGE  
OF ENGINEERING

MYSORE ROAD, RAMOHALLI CROSS

KUMBALGODU

BANGALORE-560074

KARNATAKA

KIND ATTN MR KADIAK BADIISA

PHONE: 919900058204

**INVOICE****ORIGINAL KONE**

TIN

29250480461

PAN

AAACK2567P

ServTax RegnNo.

AAACK2567PS1001

**CUSTOMER NAME & ADDRESS**M/s RAJA RAJESHWARI COLLEGE  
OF ENGINEERING

MYSORE ROAD, RAMOHALLI CROSS

KUMBALGODU

BANGALORE-560074

KARNATAKA

Invoice No : 136028044

Date : 26-JUN-2015

Sales District : 282BA

Business Area : V1

Cust TIN:

Cust Serv Tax No:

Sales Order No: 6274208

Sales Order Date: 20-FEB-2014

Cust Code: 12428703

Order No: KEI/0013/201401/0003365839

Order Date: 20-JAN-2014

ADD: RAJARAJESWARI COLLEGE OF ENGINEERING, RAMOHALLI CROSS, MYSORE ROAD,  
KUMBALGODU BANGALORE-560074, KARNATAKA**DESCRIPTION**

Equipment No(s): 42060269 Network No &amp; Description : 70168503 PW13/10-19

QTY

AMOUNT(INR)

1

1,934,158.20

Gross Contract Value for Design, Manufacture, Supply, Installation, Testing and Commissioning of Elevator

RUPEES ONE MILLION NINE HUNDRED THIRTY-FOUR THOUSAND ONE  
HUNDRED FIFTY-EIGHT AND PAISE TWENTY ONLY

The above contract price is inclusive of all applicable taxes

**Base Value**

VAT @14.50% on 85.00% of Base Value

1,690,328.34

Service Tax @14.00% on 15.00% of Base Value

208,332.97

Service Tax Rs. 35496.89

35,496.89

We arrange to make your payment favouring "KONE Elevator India Private Limited".  
The Bank details are provided below.**TOTAL**

1,934,158.20

Name of the Service : Works contract service

Note: Please release payment IMMEDIATELY on receipt of this Invoice to avoid Interest @ 18% p.a., kindly ignore if already paid.

**Bank Details**

Bank Account # KONE12428703

Bank Name : Citibank, N.A 163, Annasalai, Chennai 600002

IFSC Code : CITI0000003

E &amp; OE

For KONE Elevator India Private Limited

**AUTHORISED SIGNATORY**Regd Office : 50/55 & 58, Vanagaram Road, Ayanambakkam, Chennai-600095, Ph 044-26533901/02/03/04  
Fax : 044 26533912 www.kone.com

Principal

RAJARAJESWARI

COLLEGE OF ENGINEERING

Ramohalli Cross, Bengaluru-74

Amount payable Rs 1,97,158.22

PTD -

**KONE Elevator India Private Limited**

No.4/1,Zenith Chambers Anjaneya  
Swamy Temple Rd Opp 6th Cross ,Wilson  
garden  
Bangalore-560027  
KARNATAKA  
Phone-080-26573969

**TAX INVOICE**

GST No : 29AAACK2567P1ZX  
CIN : U29141TN1984FTC010913

**BILLING ADDRESS**

M/s RAJARAJESHWARI COLLEGE  
OF ENGINEERING  
NO 14, RAMOHALLI CROSS  
KUMBARLGODUMYSORE ROAD  
BANGALORE-560074  
KARNATAKA  
PHONE-919980208199  
GSTIN/Unique ID:

**CUSTOMER NAME & ADDRESS**

M/s RAJARAJESHWARI COLLEGE  
OF ENGINEERING  
NO 14, RAMOHALLI CROSS  
KUMBARLGODUMYSORE ROAD  
BANGALORE-560074  
KARNATAKA  
GSTIN/Unique ID:

Invoice No : 8120001076

Date : 29-JUL-2017

Sales District : 282BAJ

Business Area : VA

Sys Contract Ref No: 41364975

Sys Contract Ref Date: 28-JUL-2017

Cust Code: 12428703

Order No: T-0001765712

Order Date:

Cust PAN: AAATM1102H

**Details Of Consignee(Shipped to)**

SITE ADD:RAJA RAJESHWARI COLLEGE,MYSORE ROAD, RAMOHALLI  
CROSS,,KUMALGODU,,BANGALORE,560074,KARNATAKA  
Place Of Supply: KARNATAKA GSTIN:

Reverse Chargeable - "NO"

Towards charges for Servicing the below Elevators/Escalators for KONE Care Plus

Equipment Number	Description	HSN/SAC	AMC Period		Qty	UOM	Rate/UOM	Base Value
			From	To				
42060269	KONE CARE CONTRACT	998718	23.06.2017	22.06.2018	1.000	PC	62850.96	62850.96
Total Base Value								62850.96
CGST 9.00%								5656.59
SGST 9.00%								5656.59
IGST								
UTGST								
Total								74164.14

Rupees In Words: RUPEES SEVENTY-FOUR THOUSAND ONE HUNDRED SIXTY-FOUR AND PAISE FOURTEEN ONLY

**Name of the Service : Maintenance or Repair Service**

Note: Please release payment IMMEDIATELY on receipt of this Invoice to avoid Interest @ 18% p.a., kindly ignore if already paid.

Kindly arrange to make your payment favouring "KONE Elevator India Private Limited". For E-Transfers the Bank details are provided below

virtual Account# : 555512428703  
Current Account# 42205015170  
Bank Name & Address Standard Chartered Bank  
#19, Rajaji Salai, Chennai-  
600001  
IFSC SCBL0036078

For KONE Elevator India Private Limited

Signature valid

AUTHORISED SIGNATORY  
Digitally signed by C BALAJI  
Date: 29.07.2017 11:00:00

Regd Office : 50-55 & 58, Vanagaram Road, Ayanambakkam, Chennai-600095, Ph:044-26533901/02/03/04

Fax : 044-26533912, www.kone.com

Page 1 of 1

Forwarded to  
Electrical Dept  
Dm

Principal  
RAJARAJESHWARI  
COLLEGE OF ENGINEERING  
Ramohalli Cross, Bengaluru-77







Anappa  
9901344

**Grace Farm & Nursery**

8107011602  
8107132629

**Grace Farm & Nursery**  
Growers of (Rare Rooted Plants, outdoor & indoor  
Flowers, Land Slips, Garden Materials  
Chunchuruppe (P), Tharavare (H), Doddabidmar, Road,  
Kothahalli, Bangalore South - 562130

No: 487

Date: 18/03/19

Mr: Rajarajeswari Engineering College

Sl No	Particulars	Qty	Rate	Amount
1	Black Lilly	100	35	3500
2	Bird 7 paradise	4	1000	4000
3	Antiseret - red	100	15	1500
4	<del>Flora Lilly</del> (X)	<del>50</del>	<del>35</del>	<del>1750</del>
5	Exoria	6	150	900
6	Pendamas	400	35	14000
7	Lon 17/2	2800	21	58800
8				<del>45000</del>
9	(+)	71600		81450
10				69000
	Total			153450

Loadings & Packing

Principal  
RAJARAJESWARI  
COLLEGE OF ENGINEERING  
Ramohalli Cross, Bengaluru 26

Leaves  
Plants in  
RACE OTS when  
new accident making

*[Signature]*

RACE Garden maintenance  
per page work

272  
18/03/19

R.R.C.E. - B - 74	
Certified that the items/equipments supplied in this	
bill/invoice are taken to R.R.C.E. major stock entry	
register vide page No. 64	Sl. No. 5386
Date 22/4/19	
<i>[Signature]</i> S. M. N. C.	Principal

Back Bone	
Signature <i>[Signature]</i>	
Date	

*[Signature]*  
Principal  
RAJARAJESWARI  
COLLEGE OF ENGINEERING  
Ramohalli Cross, Bengaluru-7427

8197011602  
8197132529

ಗ್ರೇಸ್ ಫಾರಂ & ನರ್ಸರಿ  
Grace Farm & Nursery

**ORIGINAL**

of : Rose Rooted Plants, outdoor & indoor  
Flowers, Land Skips, Garden Materials

Chunchanakuppe (P), Tavarekere (H), Doddaladamara, Road,  
Kethohalli, Bangalore South - 562130

Date : 18/03/19

No : 186

Ms : Rajarajeswari Engineering College

Sl No	Particulars	Qty	Rate	Amount
1	Black ficus	20	150	3000
2	Onaseena colorum	40	35	1400
3	Onaseena maatma	50	40	2000
4	Swathi palom	100	35	3500
5	golden duranta	1000	16	16000
6	AKilipa onasea	1000	16	16000
7	Anthorium	30	300	9000
8	golden siphus	42	300	12600
9	Ribbon grass	100	20	2000
10	Spider lilly	100	35	3500
Total				69000

Loadings & Packing Charges extra

For : Grace Farm & Nursery

Rupees : 59000

GRACE FARM & NURSERY  
Punugumranahalli, Chunchanakuppe Post  
Kethohalli, Bangalore South - 562130

Principal  
RAJARAJESWAR  
COLLEGE OF ENGINEERING



Received  
Plants for RRC  
OTS also  
new cradles making  
QSM

12 RCE Gordon Markham  
Physics works

2-8  
18/03/19

**R.R.C.E. - B - 74**

Certified that the items/equipments supplied in this  
bill/invoice are taken to RRCE major stock entry  
register vide page No. 64 Sl. No. 5725  
Date 29/4/19

Smith  
Store I/C

Principal

J. Red

Principal  
RAJARAJESWARI  
COLLEGE OF ENGINEERING  
Ramchalli Cross, Bengaluru-74

Balk Bone

Signature Smith

Date.....

## RAJARAJESWARI COLLEGE OF ENGINEERING

Approved by AICTE, New Delhi.

Affiliated to the Visvesvaraya Technological University, Belagavi



Criteria: 7



### 7.1.5: Green campus initiatives include:

5. Inc & Exp. account highlighting the amount spend on the referred facilities certified by external auditor counter signed by Principal.

**Inc & Exp. account statement for the financial year 2019-20 is attached**

*[Handwritten signature]*

**Principal**

Principal  
RAJARAJESWARI  
COLLEGE OF ENGINEERING  
Ramohalli Cross, Bengaluru-74

24

R.R. COLLEGE OF ENGINEERING			
Statement of Affairs for the year ended 31st March 2020			
		Sch.No	31.03.2020 Rs.
<b>Sources of Funds:</b>			
1	Trust Fund	1	13,38,94,420
6	Secured Loans		1,05,00,000
			14,43,94,420
<b>Application Of Funds:</b>			
226	Fixed Assets(Net)	2	17,44,06,049
289	Investments - Deposit with BESCOM		9,18,607
<b>Current Assets, Loans &amp; Advances</b>			
473	Cash In Hand		
479	Bank Balances		
375	TDS Receivable		6,15,86,293
472	Tuition Fees Receivable		
536	Other Receivables- Taxes u/s 153A		5,53,53,501
337	Loans & Advances		2,00,00,000
	(A)	3	10,66,550
			13,80,06,344
36	Less: Current Liabilities (B)	4	16,89,36,580
	Net Current Assets(A-B)		(3,09,30,236)
			14,43,94,420

For Mopgambigal Charitable & Educational Trust

*S. Lakshmi Chelam*

Managing Trustee / Trustee



*N.C. Ananthakumar*  
N.C. ANANTHAKUMAR, M.Com., F.C.A.,  
CHARTERED ACCOUNTANT  
No. 10, Trustpakkam South,  
Raja Annamalaiapuram, Chennai-600 028.

*J. adl*  
Principal  
RAJARAJESWARI  
COLLEGE OF ENGINEERING  
Pamohalli Cross, Bengaluru-74



(925)

R R COLLEGE OF ENGINEERING				
INCOME & EXPENDITURE ACCOUNT FOR THE YEAR ENDED 31ST MARCH 2020				
				31.03.2020
	Income :			Rs.
598	Students' Fees +	5		* 23,19,12,889
2200	Other Income	6		34,57,973
			(C)	23,53,70,862
	Expenditure :			
2373	Employees' Cost	7		9,26,59,125
2404	Administrative & Other exp	8		10,23,72,211
2432	Depreciation			2,23,46,560
			(D)	21,73,82,896
	Excess of Income Over Expenditure (C:D)			1,79,87,966

For Hoogambigal Charitable & Educational Trust

*S. Lalitha Lakshmi*

Managing Trustee / Trustees



N.C. ANANTHAKUMAR, M.Com., F.C.A.,  
CHARTERED ACCOUNTANT  
No. 10, Thirupakkam South,  
Rajagangalam, Chennai-600 028.

*J. adh*

Principal  
RAJARAJESWARI  
COLLEGE OF ENGINEERING  
Samohalli Cross, Bengaluru-74

R-R COLLEGE OF ENGINEERING			
Schedules :			
Sources of Funds			
1	Schedule 1 : Trust Fund		31.03.2020
	Opening Balance		Rs:
			11,59,06,454
	Add : Excess of Income over Expenditure		1,79,87,966
			13,38,94,420
2			
218	Investments no. 2		
298	Deposit for Electricity		9,18,607
			9,18,607
Schedule 3: Loans & Advances:			
337	Staff and Salary Advances:		
	other Advance		86,000
			9,80,550
			10,66,550
Schedule No: 4: Current Liabilities:			
92	Liability for Expenses		79,63,194
57	Sundry Creditors		1,25,03,135
174	Liability for Others		7,18,96,883
	PF Payable		5,32,183
	ESI Payable		
537	Intra Units		7,04,99,074
105	T D S Payable - Others		67,963
113	T D S Payable - Salary		2,38,063
74	Fees Received in Advance		52,36,085
			16,89,36,580
Schedule 5: Students' Fees			
606	Tuition Fees		14,62,76,752
2118	College Fees		5,92,90,897
2119	Hostel Fees/Mess Fees collection		2,42,10,200
2127	Transport Fees		19,94,705
2113	Other Fees		1,40,335
			23,19,12,889
Schedule No: 6 Other Income			
2225	Interest on Savings Bank		20,93,402
1688	Interest received from others		2,87,086
	Rent		1,67,595
2234	Miscellaneous Income		9,09,890
			34,57,973
Schedule No: 7: Employees' Cost			
2526	Salary and Wages		9,26,59,125
			9,26,59,125



J. edh

Principal  
RAJARAJESWARI  
COLLEGE OF ENGINEERING  
Ramahalli Cross, Bengaluru-74



(27)

R R COLLEGE OF ENGINEERING			
Schedule No:8:Administrative & Other Expi			31.03.2020.
			Rs.
2408	Advertisement		20,92,606
2412	Annual Maintenance		7,40,855
2411	Annual & Sports Day Expenses		7,90,783
2417	Bank charges/Guarantee Comm.		42,372
2425	Consultancy/Professional Charges		1,37,000
2436	Examination expenses		1,48,585
2434	Electricity Charges		55,25,794
2461	Lab Consumables & Expenses		2,46,512
	Contribution to Provident Fund		33,69,801
2435	Contribution to ESI		6,53,556
2441	Functions, Celebrations & Free Medical Camp		14,99,214
2455	Inspection Expenses		35,467
2456	Insurance		1,63,725
1920	KEA Expenses		10,38,000
	Hostel Maintenance Expenses		1,40,441
2454	House Keeping Expenses		1,93,412
2486	Office Expenses		37,688
2423	Mess & Catering Expenses		1,35,13,178
2529	Meetings, Seminar & Conference Exp		19,26,350
2482	Miscellaneous Expenses		16,768
2493	Postage & Courier Expenses		23,156
2495	Printing & Stationary		23,93,445
2503	Rates & Taxes		4,60,250
2511	Professional Expenses		
2517	Repairs & Maintenance - Building		1,83,68,649
	Repairs & Maintenance - Electricals & Equip		9,92,610
	Repairs & Maintenance - Vehicles		830
1975	Repairs & Maintenance - Others		2,16,964
2510	Remuneration		50,70,650
2522	Research and Development		5,54,000
2528	Security Service Charges		
	Staff/Student Welfare Expenses		13,03,671
2537	Telephone & Communication Expenses		4,70,835
2543	Travelling & Conveyance		3,30,683
2508	Registration & Renewal Fees		89,84,159
2491	Pooja Expenses		1,11,409
2552	Vehicle Maintenance - fuel exp		1,00,10,833
2549	Insurance - Vehicle		3,75,000
2479	Membership & Subscription		38,215
2459	Interest on Term Loan / OD		2,52,89,745
2487	Parking exp		1,00,000
		TOTAL	10,23,77,211



J. ed

Principal  
RAJARAJESWARI  
COLLEGE OF ENGINEERING  
Ramohalli Cross, Bengaluru-74



28

RAJA RAJESWARI COLLEGE OF ENGINEERING								
Schedule No: 2: FIXED ASSETS								
DESCRIPTION	1.4.2019	ADDITIONS	DELETIONS	DEDUCTIONS	TOTAL	Dep/%	DEP	31.03.2020
Air conditioner	3,02,801				3,02,801	15	45,420	2,57,381
Building	11,20,75,341				11,20,75,341	10	1,12,07,534	10,08,67,807
Building Work in Progress	98,80,625	70,68,672			1,69,49,301			1,69,49,301
Computer Equipments	8,29,212	13,72,729			22,01,941	60	13,21,165	8,80,776
Electrical & Electronic Equipments	2,17,21,846	5,82,811			2,23,04,657	15	33,45,699	1,89,58,958
Furniture & Fittings	1,63,17,211	12,47,775			1,75,64,986	10	17,56,499	1,58,08,487
Generator	10,40,133				10,40,133	15	1,56,020	8,84,113
Kitchen Equipments	49,988				49,988	15	7,498	42,490
Lab & Medical Equipments	87,41,948	2,45,440			89,87,388	15	13,48,108	76,39,280
Library Books	73,86,525	5,41,536			79,28,061	15	11,89,209	67,38,852
Motor Vehicles	36,42,459				36,42,459	15	5,46,369	30,96,090
Office Equipments	11,38,337	26,411			11,64,748	15	1,74,712	9,90,036
Software	5,67,125	13,60,000			19,27,125	60	11,56,275	7,70,850
Sports Equipment	4,28,928	1,84,752			6,13,680	15	92,052	5,21,628
TOTAL	18,41,22,483	1,26,30,126			19,67,52,609		2,23,46,560	17,44,06,049

J. adh  
Principal  
RAJARAJESWARI  
COLLEGE OF ENGINEERING  
Mangalathi Cross, Bengaluru-74



# RAJARAJESWARI COLLEGE OF ENGINEERING

Approved by AICTE, New Delhi.

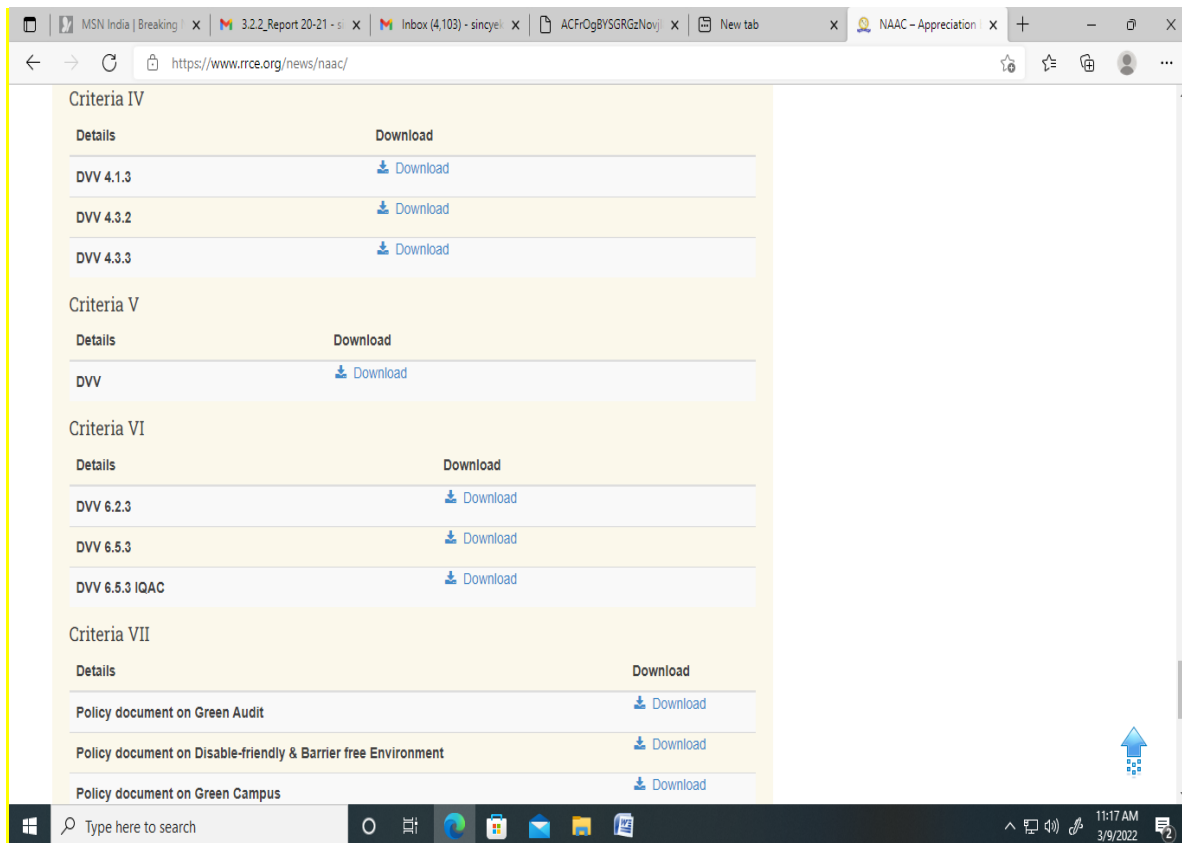
Affiliated to the Visvesvaraya Technological University, Belagavi




Criteria: 7

## 7.1.5: Green campus initiatives include:

6. Please provide screenshot of web pages of the College website mentioning the green policy/web link to College web site to support the HEI claim.



<https://www.rce.org/rce/wp-content/uploads/2016/12/Policy-document-on-Green-Campus.pdf>

  
PRINCIPAL  
Principal  
RAJARAJESWARI  
COLLEGE OF ENGINEERING  
Ramohalli Cross, Bengaluru-74

**RAJARAJESWARI COLLEGE OF ENGINEERING**

Approved by AICTE, New Delhi.  
Affiliated to the Visvesvaraya Technological University, Belagavi



Criteria: 7

**7.1.5: Green campus initiatives include:**

7. Please provide geo tagged photographs/ videos with captions & dates for all facilities mentioned in DVV portal.

Sl. No.	Name of the facility	Name of the photo	Date
1	Pedestrian friendly pathways	Pedestrian friendly pathways	12/11/2021
2	Ban on using plastics	Ban on using plastics	04/11/2021
3	Pedestrian friendly ramps	Pedestrian friendly ramps	12/11/2021
4	Landscaping with trees and plants	Landscaping with trees and plants	12/11/2021
5	Landscaping with trees and plants	Landscaping with trees and plants	12/11/2021
6	Promotion of Battery Powered Vehicle	Restricted entry of Automobiles	12/11/2021
7	Promotion of Battery Powered Vehicle	Columbus Electric	04/03/2022
8	Promotion of Battery Powered Vehicle	Choose an Electric Car See the difference	04/03/2022
9	Ban on using plastics	How to make UL a Plastic free campus	04/03/2022
10	Ban on using plastics	6 Easy ways to reduce your waste	04/03/2022
11	Ban on using plastics	Say No to Plastic	04/03/2022
12	Pedestrian friendly pathways	Lift / Elevator	26/02/2022

Principal

RAJARAJESWARI

COLLEGE OF ENGINEERING

Ramohalli Cross, Bengaluru-74

#14, Ramohalli Cross, Kumbalagodu, Mysore Road, Bengaluru-74

<https://www.rrce.org>





**Bengaluru, Karnataka, India**

Rajarajeswari College Of Engineering Digital Zone, Rajarajeswari College Of Engineering, Bengaluru, Karnataka 560074, India  
Lat 12.887078°

Long 77.450228°  
12/11/21 04:26 PM

**Pedestrian friendly pathways**



No single use water bottles.  
Refill and reuse

ಪ್ಲಾಸ್ಟಿಕ್‌ನ ಬಳಕೆ  
ನಮ್ಮಿಂದ ಸಾಧ್ಯ!

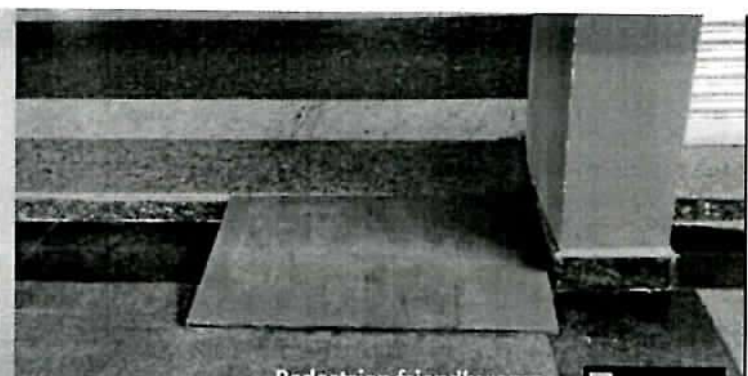


**Bengaluru, Karnataka, India**

Rajarajeswari College Of Engineering Digital Zone, Rajarajeswari College Of Engineering, Bengaluru, Karnataka 560074, India  
Lat 12.88705°

Long 77.450153°  
04/11/21 01:15 PM

**Ban on using plastics**



**Pedestrian friendly ramps**



**Bengaluru, Karnataka, India**

Rajarajeswari College Of Engineering Digital Zone, Rajarajeswari College Of Engineering, Bengaluru, Karnataka 560074, India  
Lat 12.887078°

Long 77.450228°  
12/11/21 04:24 PM



**Landscaping with trees and plants**

GPS Map Camera



**Bengaluru, Karnataka, India**

Rajarajeswari College Of Engineering Digital Zone, Rajarajeswari College Of Engineering, Bengaluru, Karnataka 560074, India  
Lat 12.887078°

Long 77.450228°  
12/11/21 04:30 PM



**Landscaping with trees and plants**

GPS Map Camera



**Bengaluru, Karnataka, India**

Rajarajeswari College Of Engineering Digital Zone, Rajarajeswari College Of Engineering, Bengaluru, Karnataka 560074, India  
Lat 12.887078°

Long 77.450228°  
12/11/21 04:27 PM



**Bengaluru, Karnataka, India**

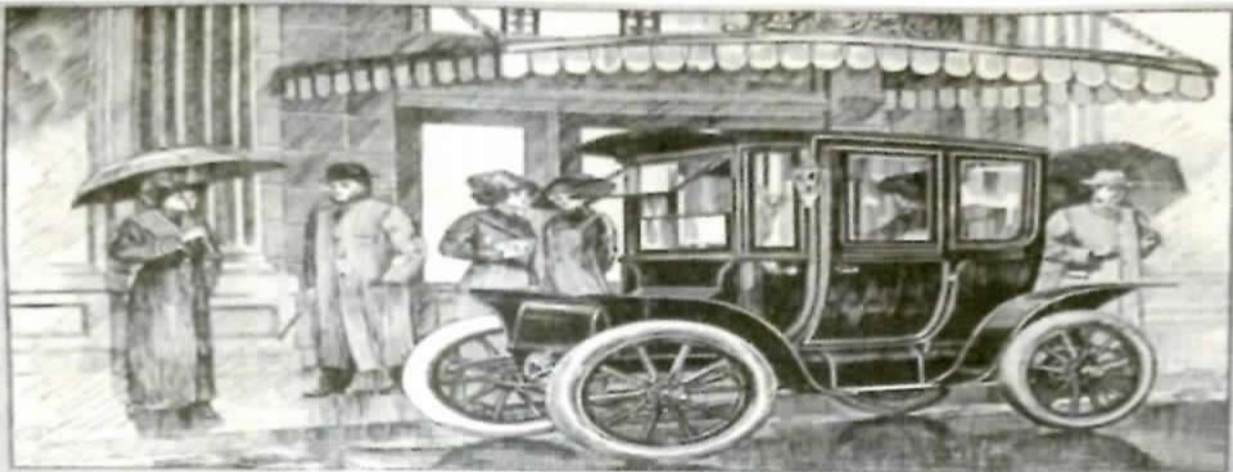
Rajarajeswari College Of Engineering Digital Zone, Rajarajeswari College Of Engineering, Bengaluru, Karnataka 560074, India  
Lat 12.887078°

Long 77.450228°  
12/11/21 04:26 PM

**Restricted entry of Automobiles**

3. 0.0.0.0





**T**HE well-dressed woman who must go home from the theatre on the street cars, scarcely sees or enjoys the last act of the play. She sees instead only the disagreeable ordeal that is to come. To her the privacy of a car like the

## **COLUMBUS ELECTRIC**

would mean more than you could ever guess—until you ask her about it. Our Model 1225, shown above, is typical of the various models we make. It will pay you to investigate.

*See our Catalogue 67-E.*

**THE COLUMBUS BUGGY COMPANY**  
567 Dublin Ave. Columbus, Ohio



### **Bengaluru, Karnataka, India**

RajaRajeswari College of Engineering Digital Zone,  
RajaRajeswari College of Engineering, Bengaluru, Karnataka  
560074, India.

Lat 12.886897°

Long 77.450172°

04/03/22 12:28 PM

*J. adl*

Principal  
**RAJARAJESWARI**  
COLLEGE OF ENGINEERING  
Ramohalli Cross, Bengaluru-74

# CHOOSE AN **ELECTRIC CAR:** SEE THE DIFFERENCE

## GAS-ELECTRIC HYBRID

Vehicle's kinetic energy is converted to electric energy; no external power source



## PLUG-IN HYBRID

Battery can be recharged by plugging it into an external source of electric power



## ELECTRIC CAR

Runs completely on electric battery packs, needs to be plugged in regularly for charging



- Clean Energy
- Cheaper to Run and Maintain
- Zero Exhaust Emission  
*(And much more!)*

lege  
ering

Google

## Bengaluru, Karnataka, India

RajaRajeswari College of Engineering Digital Zone,  
RajaRajeswari College of Engineering, Bengaluru, Karnataka  
560074, India.

Lat 12.886897°

Long 77.450172°

04/03/22 12:33 PM

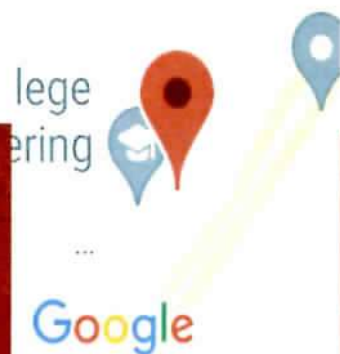
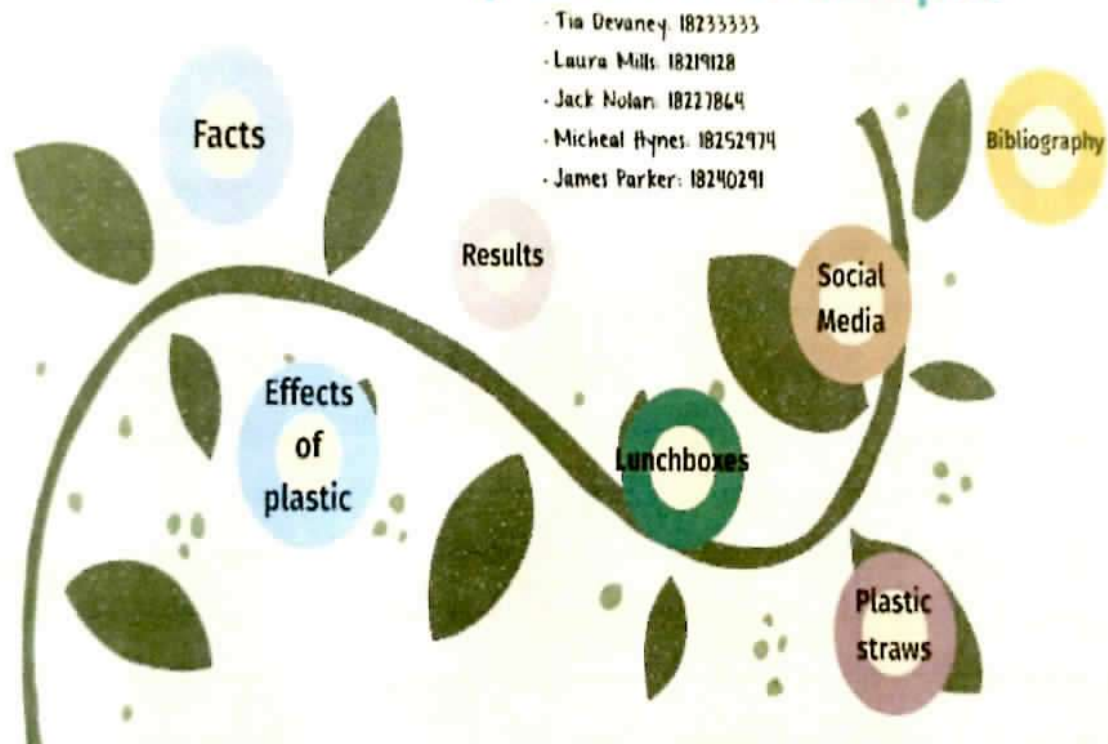


GPS Map Camera

*J. adh*  
Principal  
RAJARAJESWARI  
COLLEGE OF ENGINEERING  
Ramohalli Cross, Bengaluru-74



# How to make UL a plastic-free campus



## Bengaluru, Karnataka, India

RajaRajeswari College of Engineering Digital Zone,  
RajaRajeswari College of Engineering, Bengaluru, Karnataka  
560074, India.

Lat 12.886897°

Long 77.450172°

04/03/22 12:36 PM

*J. Redh*  
Principal  
RAJARAJESWARI  
COLLEGE OF ENGINEERING  
T. Amohalli Cross, Bengaluru-74

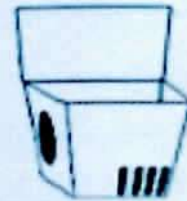
## 6 Easy Ways to Reduce your Waste



Avoid Plastic Bags



Bring Your Own Cup



Eat Less Take Out



Use Reusable  
Produce Bags



No Plastic Straws



Use a Reusable  
Water Bottle

©the good life designs



GPS Map Camera



### Bengaluru, Karnataka, India

RajaRajeswari College of Engineering Digital Zone,  
RajaRajeswari College of Engineering, Bengaluru, Karnataka  
560074, India.

Lat 12.886897°

Long 77.450172°

04/03/22 12:33 PM

*J. adh*

Principal  
**RAJARAJESWARI**  
**COLLEGE OF ENGINEERING**  
Ramohalli Cross, Bengaluru-74



A STEP TOWARDS  
BETTER TOMORROW



GPS Map Camera



### Bengaluru, Karnataka, India

RajaRajeswari College of Engineering Digital Zone,  
RajaRajeswari College of Engineering, Bengaluru, Karnataka  
560074, India.

Lat 12.886897°

Long 77.450172°

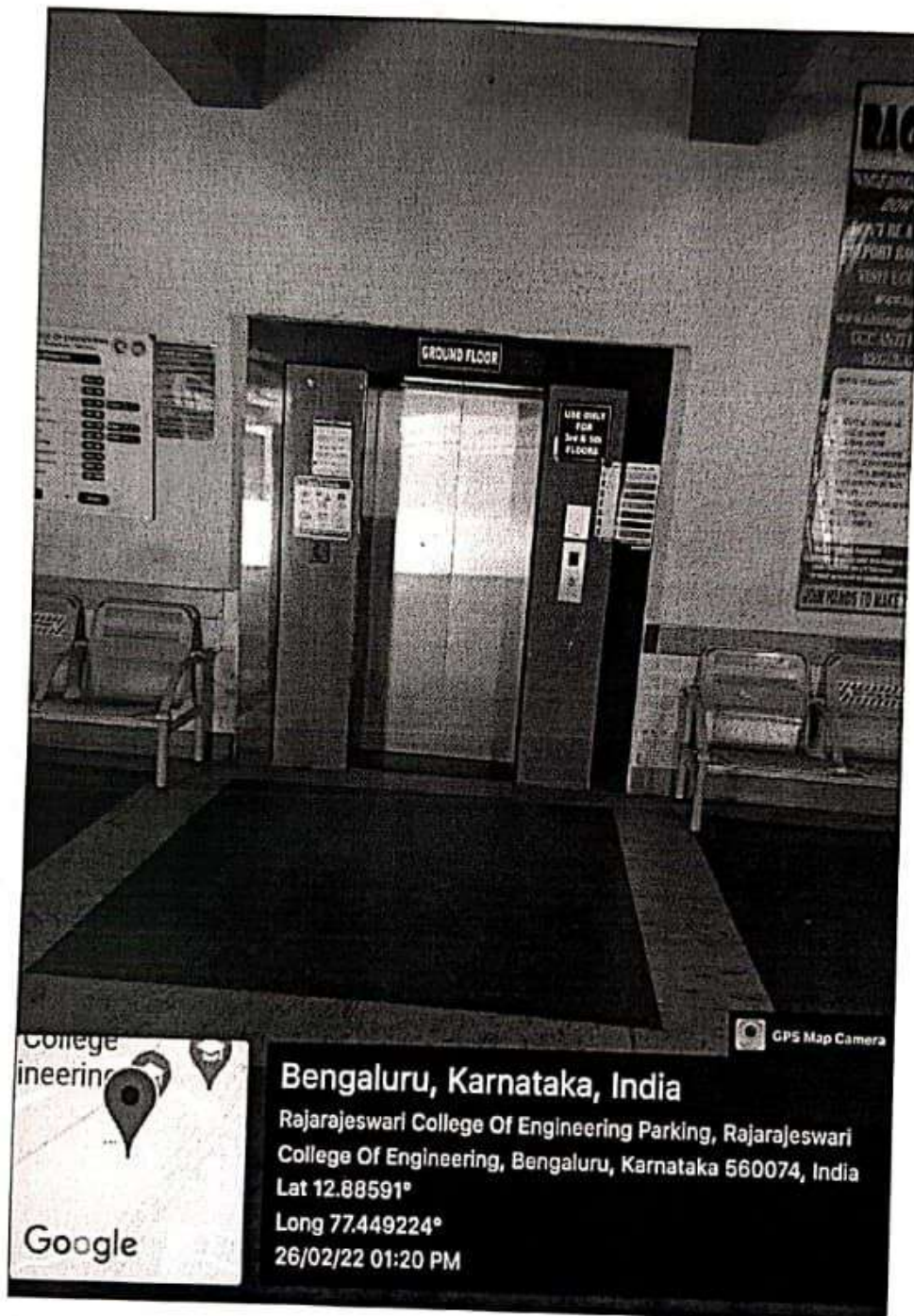
04/03/22 12:30 PM

J. adh

Principal  
RAJARAJESWARI  
COLLEGE OF ENGINEERING  
Ramohalli Cross, Bengaluru-74



## LIFT / ELEVATOR



J. Reddy

Principal  
RAJARAJESWARI  
COLLEGE OF ENGINEERING  
Ramohalli Cross, Bengaluru-74